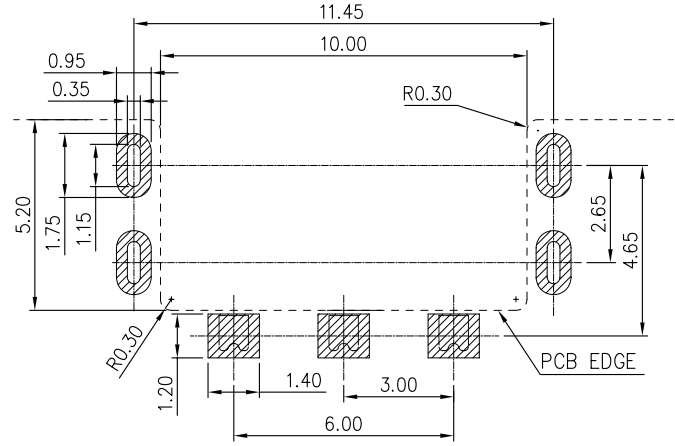
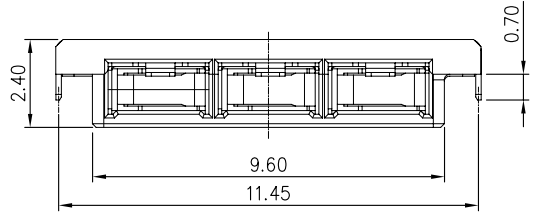
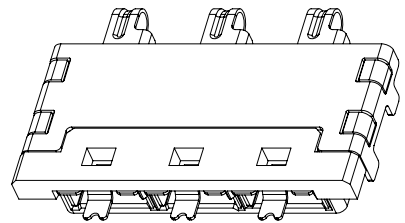
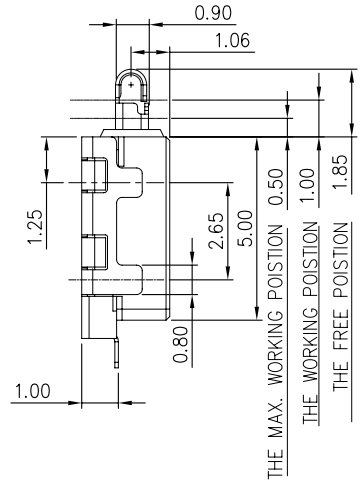
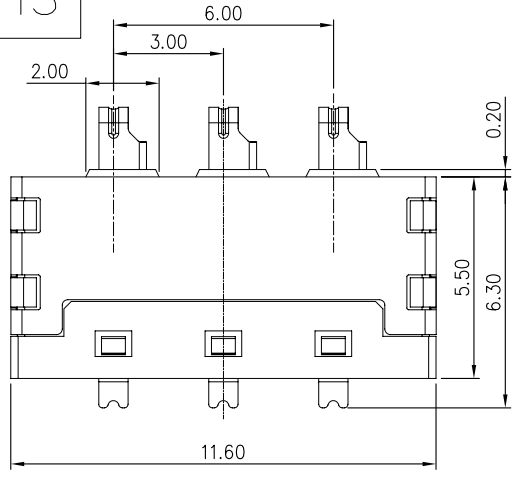
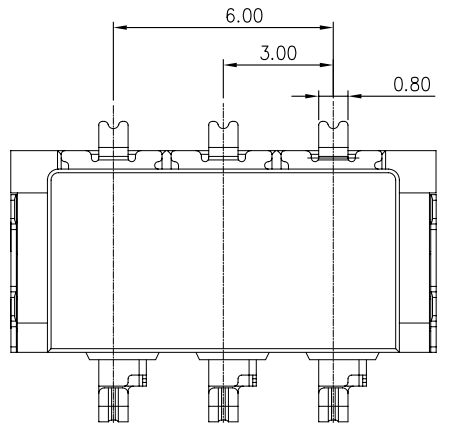


RoHS

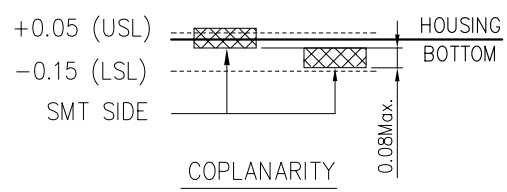
REV.	LOCAS.	DESCRIPTION	DRAW.	DATE.
01	New	INITIAL RELEASE.	Junly	2013.05.11
02		DRAWING UPDATE.	Leo	2014.05.25
03		DRAWING UPDATE.	Leo	2014.07.15



- NOTES:
- MATERIAL:
    - HOUSING: THERMOPLASTIC,UL 94V-0, COLOR:BLACK
    - CONTACT: COPPER ALLOY T=0.10mm
    - SHELL: STAINLESS STEEL T=0.15mm
  - SPECIALITY:
    - Rated current: 2.0A
    - Rated voltage: 250V
    - Contact Resistance:50mΩ MAX
    - Insulation Resistance:1000MΩ MIN 500V DC
    - Dielectric withstanding voltage: 500V DC.
    - Solder ability: 250±5℃, 10±0.5s.
    - Durability:5000 Cycles Min.Contact Resistance100mΩMax
    - Operating condition: Temperature-40℃~+85℃; Humidity 80% R.H MAX
3. PLEASE CONTACT JITS SALES REPRESENTATIVE TO VERIFY PRODUCT DETAILS & AVAILABILITY



RECOMMENDED PCB LAYOUT  
TOLERANCE(.XX±0.05)



MEASURE POINT: QUADRANT POINT (QP)  
TANGENCY POINT (TP)  
INTERSECTION POINT (IP)

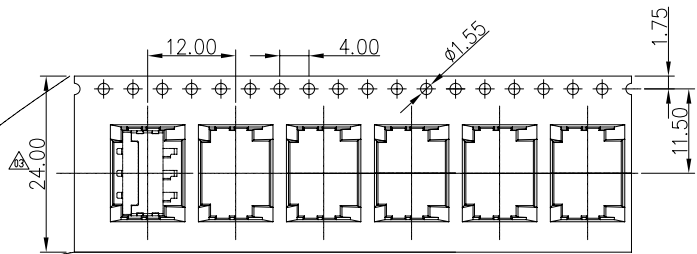
UNLESS OTHERWISE SPECIFIED, TOLERANCE:  
X. ±0.25  
X.X ±0.20  
X.XX ±0.15  
ANGULAR ±3°



DESING	Andy	DATE	2014.07.15	TITLE:	3PIN 3.00MM PITCH BATTERY H=2.40MM -B Type				
CHECKED	Nick	DATE	2014.07.15						
APPROVED	Talen	DATE	2014.07.15						
PART NO:	BA100-K301B			REV:	03	SCALE:	1:1	UNIT:	mm
DRAWING NO:	BA100-K301B			SIZE:	A4	SHEET:	1/2		

RoHS

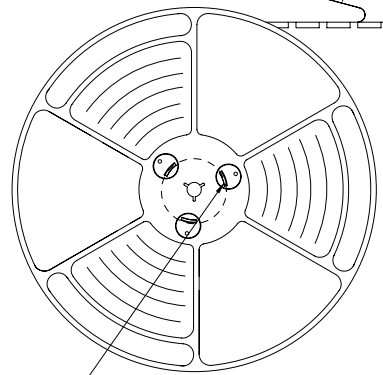
User Direction of Unreeling



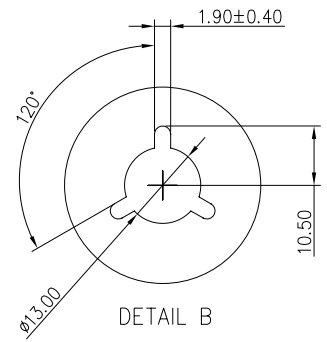
COVER TAPE PEELING ANGLE: 165°~180°  
PEELING FORCE: 20~130g

CARRIER TAPE

User Direction of Unreeling



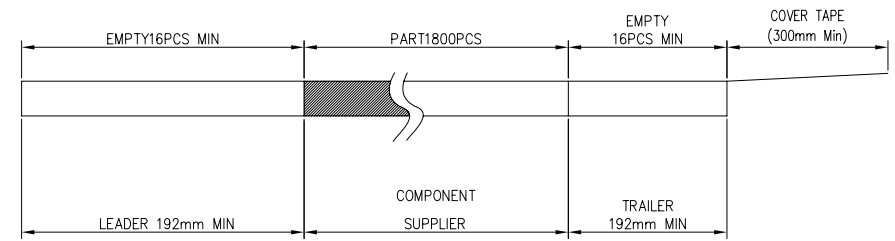
DETAIL B



DETAIL B

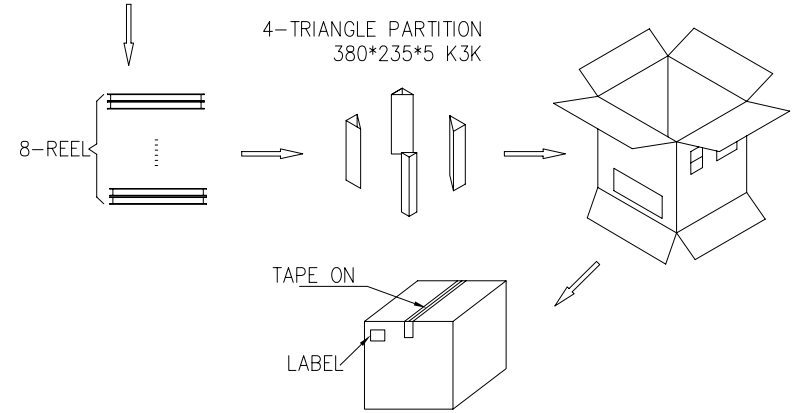
NOTES

- 1. NUMBER OF CONNECTORS: 1800PCS/REEL
- 2. LEAD TAPE LENGTH



- 3. QUANTITY: 14400PCS/CARTON
- 4. WEIGHT :
  - 3.1 NET WEIGHT : 2.88Kg
  - 3.2 GROSS WEIGHT : 4.77Kg

CARTON  
342\*342\*250 K=K



MEASURE POINT:  
 QUADRANT POINT (QP)  
 TANGENCY POINT (TP)  
 INTERSECTION POINT (IP)

UNLESS OTHERWISE SPECIFIED, TOLERANCE:  
 X. ±0.25  
 X.X ±0.20  
 X.XX ±0.15  
 ANGULAR ±3°



DESING	Andy	DATE	2014.07.15	TITLE:	3PIN 3.00MM PITCH BATTERY H=2.40MM -B Type		
CHECKED	Nick	DATE	2014.07.15				
APPROVED	Talen	DATE	2014.07.15				
PART NO: BA100-K301B				REV: 03	SCALE: 1:1	UNIT: mm	
DRAWING NO: BA100-K301B				SIZE: A4	SHEET: 2/2		