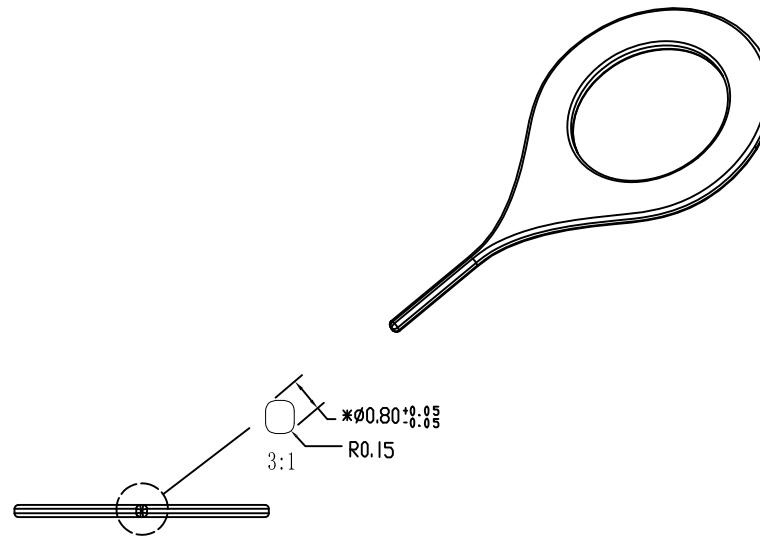
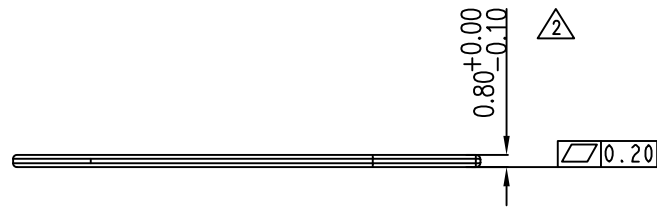
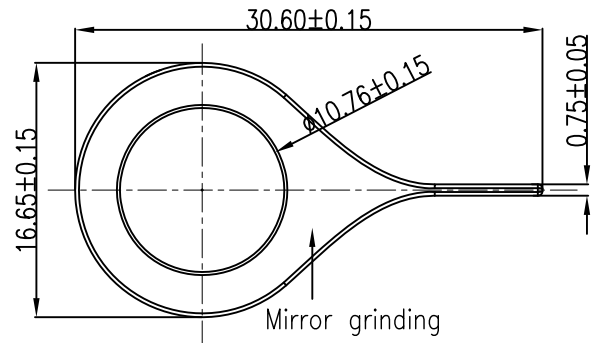


RoHS

| REV. | LOCAS. | DESCRIPTION | DRAW. | DATE. |
|------|--------|-------------------|-------|------------|
| 01 | NEW | INITIAL RELEASE. | Alan | 2015.08.27 |
| 02 | ⚠ | Tolerance changes | Alan | 2015.09.01 |



NOTES:

MATERIAL: SUS304 1/2H. T=0.8mm;
FINISH: Mirror grinding

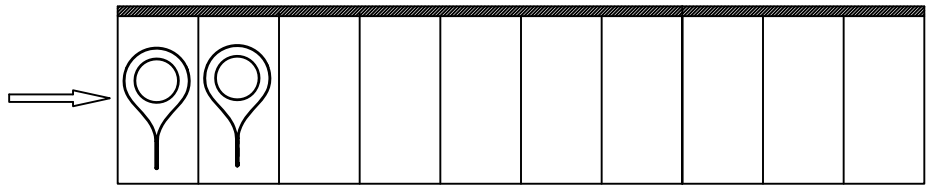
MEASURE POINT:
 QUADRANT POINT (QP)
 TANGENCY POINT (TP)
 INTERSECTION POINT (IP)

JTS *JITS TECHNOLOGY CO., LIMITED*

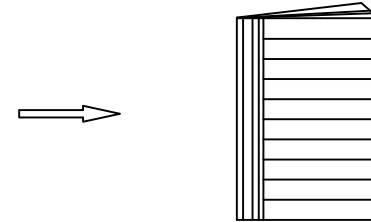
UNLESS OTHERWISE SPECIFIED, TOLERANCE:
 X. ±0.25
 X.x ±0.20
 X.xx ±0.15
 ANGULAR ±3°

| | | | | | |
|-----------------------|-------|------|------------|---|----------|
| DESIGN | Alan | DATE | 2015.09.01 | TITLE: DUST HELMET T=0.8*30.60*16.65mm | |
| CHECKED | Peter | DATE | 2015.09.01 | | |
| APPROVED | Peter | DATE | 2015.09.01 | | |
| PART NO: AAB-B02-R | | | REV: 02 | SCALE: 1:1 | UNIT: mm |
| DRAWING NO: AAB-B02-R | | | SIZE: A4 | SHEET: 1/2 | ⊕ |

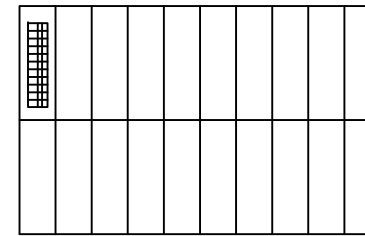
RoHS



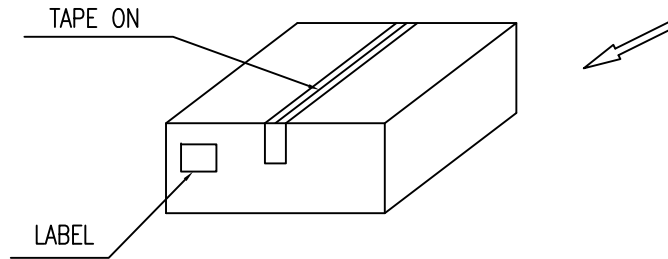
10 even bag



prick/100 PCS



20FOLD/BOX



NOTES

1. NUMBER OF SHIELD:100PCS/prick
2. EACH CONTAINING 20 prick
3. QUANTITY:2000PCS/BOX

MEASURE POINT:
 QUADRANT POINT (QP)
 TANGENCY POINT (TP)
 INTERSECTION POINT (IP)

UNLESS OTHERWISE SPECIFIED, TOLERANCE:
 X. ±0.25
 X.x ±0.20
 X.xx ±0.15
 ANGULAR ±3°



| | | | | | | |
|-----------------------|-------|------|------------|--|------------|----------|
| DESING | Alan | DATE | 2015.09.01 | TITLE: DUST HELMET T=0.8*30.60*16.65mm | | |
| CHECKED | Peter | DATE | 2015.09.01 | | | |
| APPROVED | Peter | DATE | 2015.09.01 | | | |
| PART NO: AAB-B02-R | | | | REV: 02 | SCALE: 1:1 | UNIT: mm |
| DRAWING NO: AAB-B02-R | | | | SIZE: A4 | SHEET: 2/2 | |