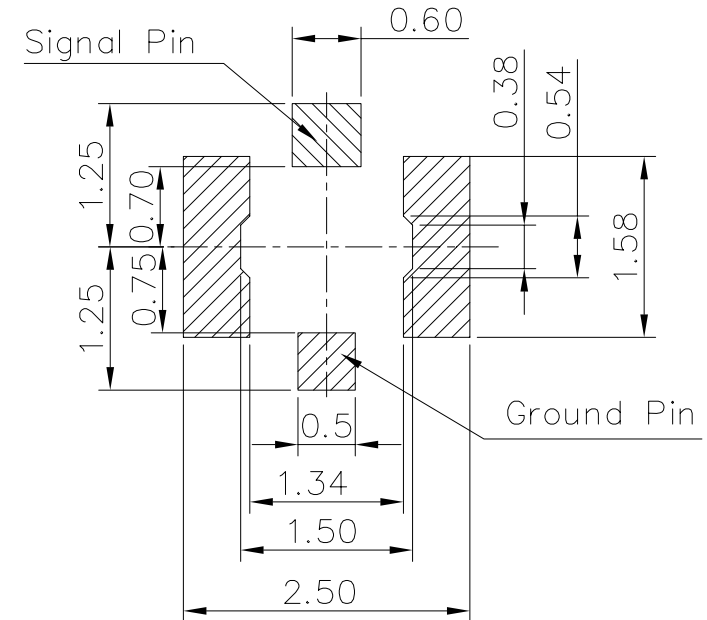
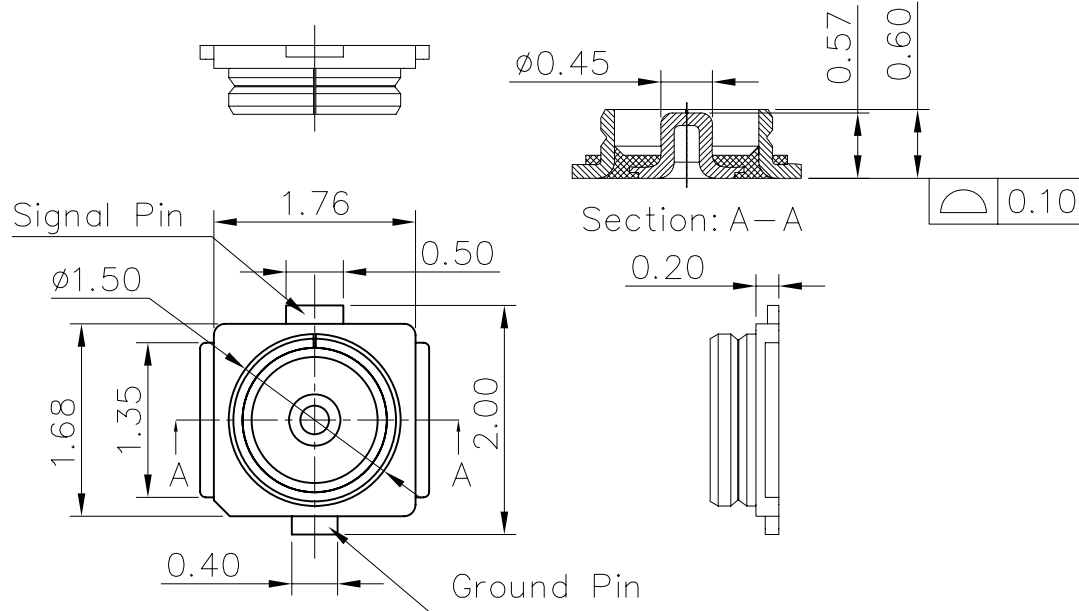


RoHS

REV.	LOCAS.	DESCRIPTION	DRAW.	DATE.
A	NEW	INITIAL RELEASE.	May	2014.05.28



NOTES:

1. MATERIAL:

1.1 Housing: High Temperature Thermoplastic
UL94V-0; Color Black.

1.2 Terminal: Copper Alloy.

1.3 Shell: Copper Alloy.

2. SPECIALITY:

2.1 Rated current: 1.0A

2.2 Rated voltage: 60V

2.3 Contact Resistance:

Signal Contact: 20 mohms Max;

Ground Contact: 20 mohms Max;

2.4 Insulation Resistance: 500Mohms MIN 100V DC

2.5 Dielectric withstanding voltage: 200V AC For 1minute.

2.6 Frequency rating: 0~6G Hz.

2.7 VSWR: 1.3 Max, 0~3GHz; 1.4 max. 3~6GHz.

2.8 Impedance: 50 ohms;

2.9 Solderability: 255°C±5°C; 5±0.5sec.

2.10 Durability: 30 Cycles.

2.11 Operating condition: Temperature -30°C~+80°C;

Humidity 80% R.H MAX

3. PLEASE CONTACT JITS SALES REPRESENTATIVE
TO VERIFY PRODUCT DETAILS & AVAILABILITY

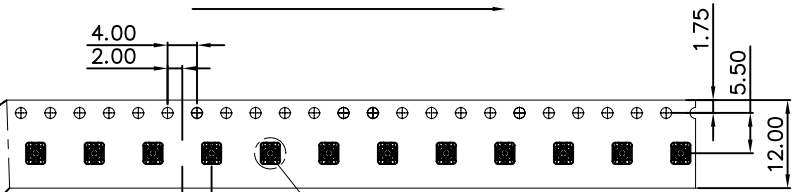
4. PART NO: R4BJ-L3B03.

RECOMMENDED PCB LAYOUT
(PCB THICKNESS TOLERANCE: ±0.05)

MEASURE POINT: QUADRANT POINT (QP) TANGENCY POINT (TP) INTERSECTION POINT (IP)			DESING Andy DATE 2014.05.28		TITLE: RF IV RECEPTACLE H=0.60mm, 4PADS			
			CHECKED Nick DATE 2014.05.28					
			APPROVED Jack DATE 2014.05.28					
			UNLESS OTHERWISE SPECIFIED, TOLERANCE:		PART NO: R4BJ-L3B03		REV: A	SCALE: 1:1
X. ±0.25	X.x ±0.20	X.xx ±0.15	ANGULAR ±3'	DRAWING NO: R4BJ-L3B03		SIZE: A4	SHEET: 1/2	

RoHS

User Direction of Unreeling



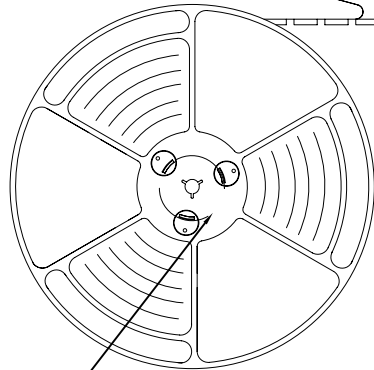
SIGNAL PIN

COVER TAPE PEELING ANGLE: 165°~180°

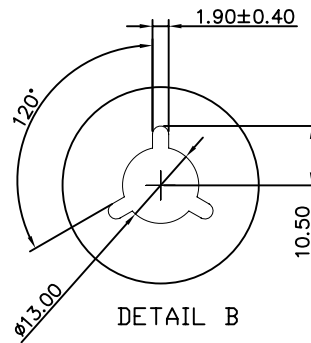
PEELING FORCE: 20~130g

CARRIER TAPE

User Direction of Unreeling



DETAIL-B

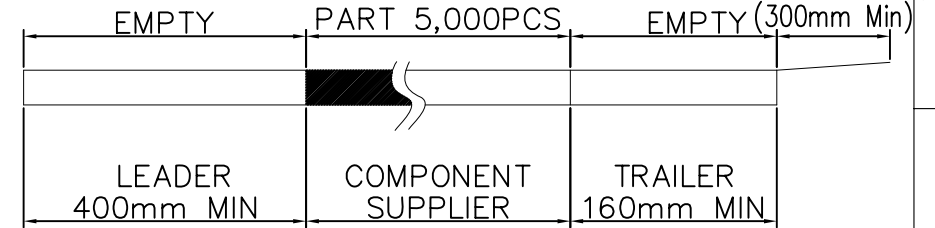


DETAIL B

NOTES

1. NUMBER OF CONNECTORS: 5,000PCS/REEL

2. LEAD TAPE LENGTH

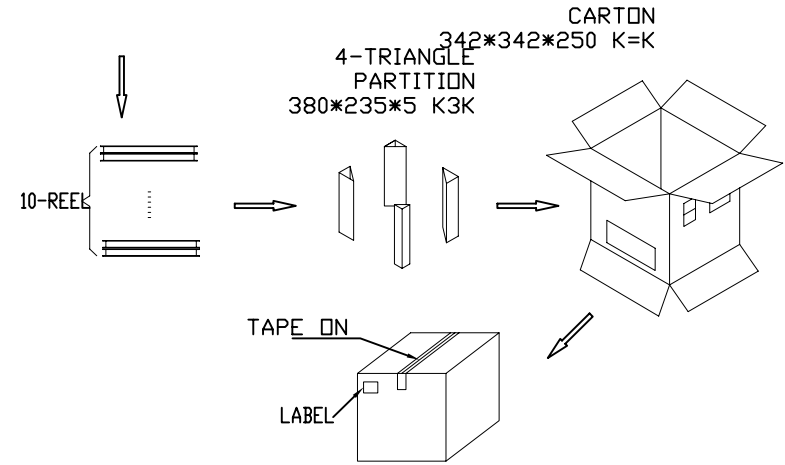


3. QUANTITY: 50,000PCS/CARTON

4. WEIGHT :

3.1 NET WEIGHT : 0.525Kg

3.2 GROSS WEIGHT : 4.28Kg



MEASURE POINT:
 QUADRANT POINT (QP)
 TANGENCY POINT (TP)
 INTERSECTION POINT (IP)

UNLESS OTHERWISE SPECIFIED, TOLERANCE:
 X. ±0.25
 X.X ±0.20
 X.XX ±0.15
 ANGULAR ±3°

JITS JITS TECHNOLOGY CO., LIMITED

DESING	Andy	DATE	2013.05.28	TITLE: RF IV RECEPTACLE H=0.60mm, 4PADS	
CHECKED	Nick	DATE	2013.05.28		
APPROVED	Jake	DATE	2013.05.28		
PART NO: R4BJ-L3B03			REV: A	SCALE: 1:1	UNIT: mm
DRAWING NO: R4BJ-L3B03			SIZE: A4	SHEET: 2/2	