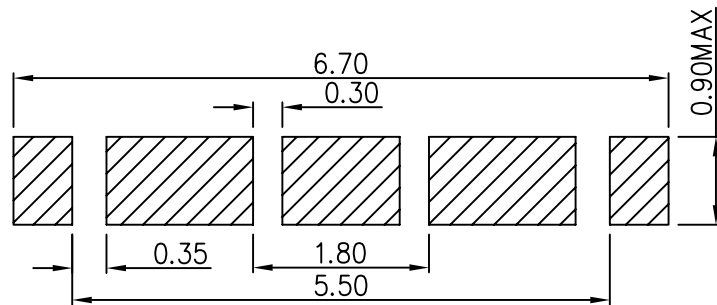
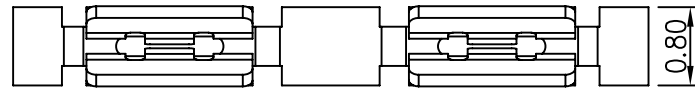
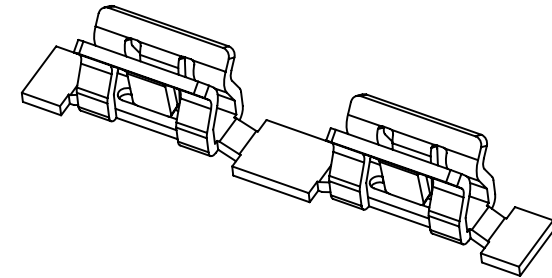
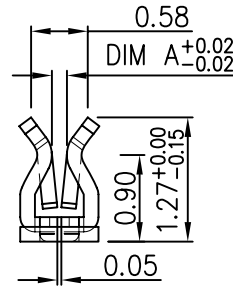
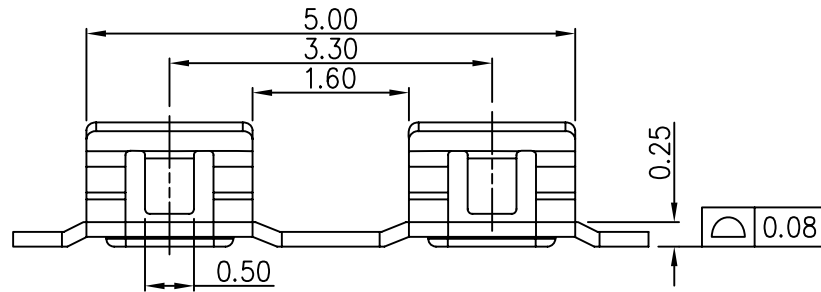
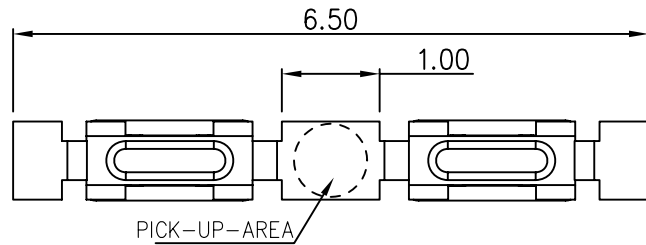


RoHS

REV.	LOCAS.	DESCRIPTION	DRAW.	DATE.
01	NEW	INITIAL RELEASE.	Junly	2013.02.26
02	△02	ECN-1407035	Alan	2014.07.28



RECOMMENDED PCB LAYOUT
TOLERANCE: ±0.05

NOTES:

SPECIALITY:

RATED CURRENT: 0.5A

RATED VOLTAGE : 30V

MATERIAL: SUS301 1/2H. T=0.15mm;

FINISH: MATTE Sn 60-80u' Over All,

60-80u' Nickel Underplating Over All △02

TABLE:

Part NO.	DIM A	Shield Can Thickness
JS-CL-1003A	0.15	0.20
JS-CL-1003B	0.10	0.15

MEASURE POINT:
 QUADRANT POINT (QP)
 TANGENCY POINT (TP)
 INTERSECTION POINT (IP)



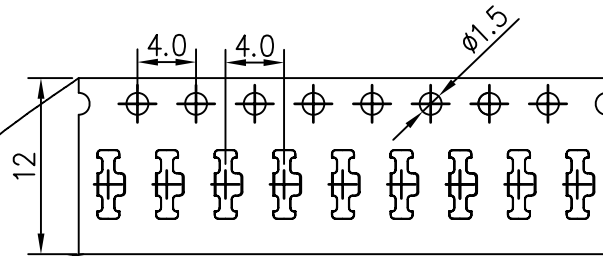
UNLESS OTHERWISE SPECIFIED, TOLERANCE:

- X. ±0.25
- X.x ±0.20
- X.xx ±0.15
- ANGULAR ±3'

DESING	Alan	DATE	2014.07.28	TITLE:	SHIELDING CASE TONGS H=1.20MM T=0.15MM*6.50MM*0.80MM			
CHECKED	Peter	DATE	2014.07.28					
APPROVED	Peter	DATE	2014.07.28					
PART NO:	JS-CL-1003X(See Table)		REV:	02	SCALE:	1:1	UNIT:	mm
DRAWING NO:	JS-CL-1003A		SIZE:	A4	SHEET:	1/2		

RoHS

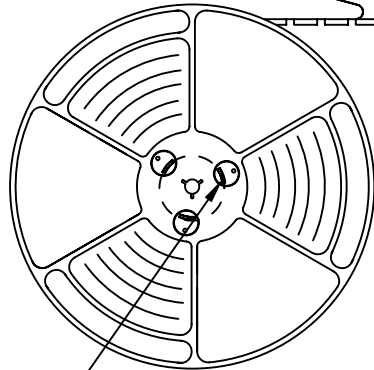
User Direction of Unreeling



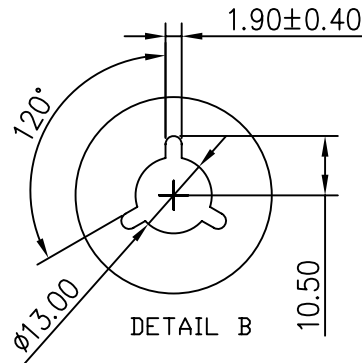
COVER TAPE PEELING ANGLE: 165°~180°
PEELING FORCE: 20~130g

CARRIER TAPE

User Direction of Unreeling



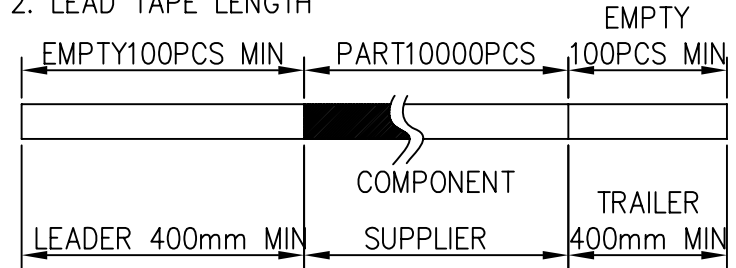
DETAIL-B



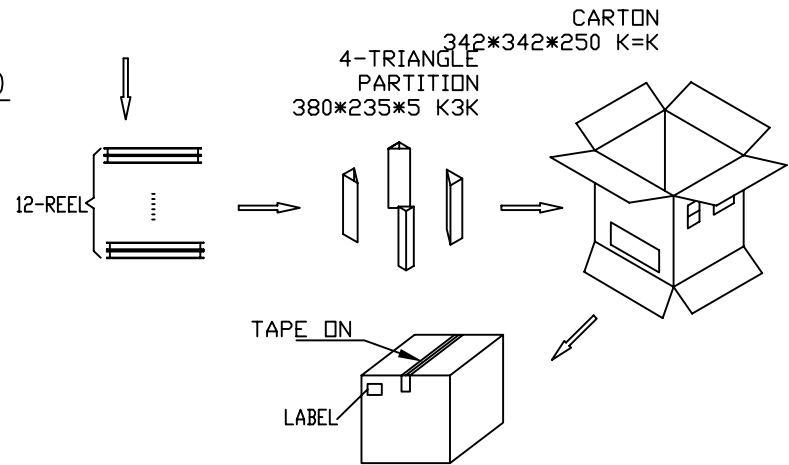
DETAIL B

NOTES

1. NUMBER OF CONNECTORS: 10000PCS/REEL
2. LEAD TAPE LENGTH



3. QUANTITY: 120000PCS/CARTON



MEASURE POINT:
 QUADRANT POINT (QP)
 TANGENCY POINT (TP)
 INTERSECTION POINT (IP)

UNLESS OTHERWISE SPECIFIED, TOLERANCE:
 X. ±0.25
 X.X ±0.20
 X.XX ±0.15
 ANGULAR ±3°

JTS JITS TECHNOLOGY CO., LIMITED

DESIGN	Alan	DATE	2014.07.28	TITLE:					
CHECKED	Peter	DATE	2014.07.28	SHIELDING CASE TONGS H=1.20MM					
APPROVED	Peter	DATE	2014.07.28	T=0.15MM*6.50MM*0.80MM					
PART NO:	JS-CL-1003X(See Table)			REV:	02	SCALE:	1:1	UNIT:	mm
DRAWING NO:	JS-CL-1003A			SIZE:	A4	SHEET:	1/2		