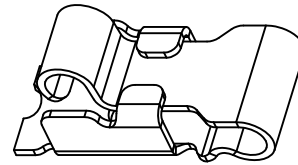
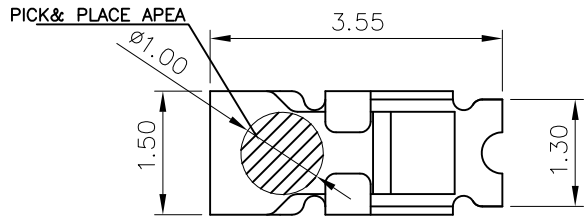


RoHS

REV.	DESCRIPTION	DRAW.	DATE.
01	INITIAL RELEASE.	Karen	2012.06.07
02	ECN1408016	Andy	2014.08.11
03	ECN1506021	Nick.Yu	2015.08.10
04	ECN1509005	Nick.Yu	2015.09.09



NOTES:

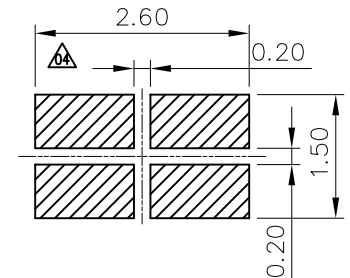
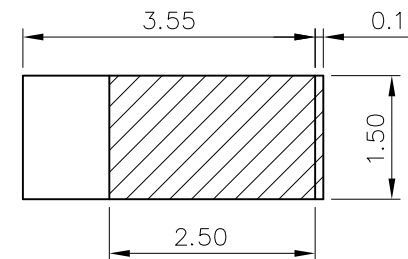
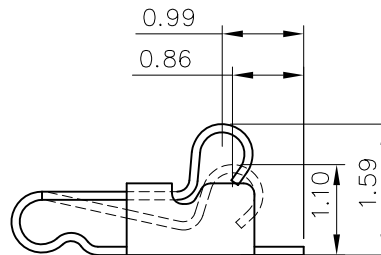
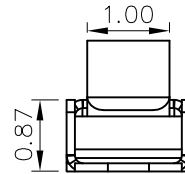
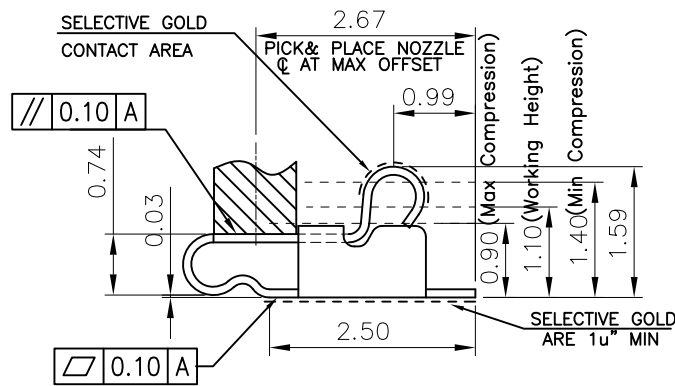
1.MATERIAL:

2.SPECIALITY:

- 2.1 Contact Resistance:30mΩ Max
- 2.2 Operating Temperature:-20°C~+65°C
- 2.3 Max. Beam Deflection:0.7mm.On Contact POINT

3. RF PERFORMANCE:

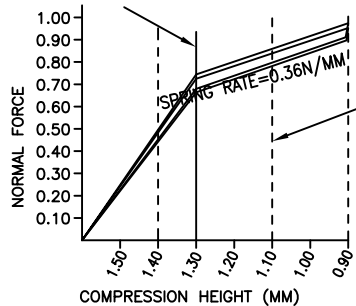
- 3.1 Impedance:50 ohm.
- 3.2 Insertion Loss: 0.6dBMax.(DC~3GHz)
- 3.3 VSWR: 1.5MAX.(DC~3GHz)



LOAD/DEFLECTION GRAPH
 MINIMUM FORCE
 TOLERANCE +0.25N / -0.0N
 Initial Preload
 0.77 -Applying Load
 0.74 -Unapplying Load
 Initial Preload
 0.73 -Applying Load
 0.71 -Unapplying Load

LOAD AT 0.90 MM HEIGHT
 INITIAL = 0.99 N (APPLYING LOAD)
 AFER 3 x REFLOW = 0.94 N

INITIAL FORCE AT 1.10MM
 COMPRESSION=
 0.88N (APPLYING LOAD)
 0.85N (UNAPPLYING LOAD)
 AFTER 3 x REFLOW =
 0.86N (APPLYING LOAD)
 0.84N (UNAPPLYING LOAD)
 INITIAL FORCE ONLY TO BE
 MONITORED BY SPC



MEASURE POINT:
 QUADRANT POINT (QP)
 TANGENCY POINT (TP)
 INTERSECTION POINT (IP)

JITS JITS
 TECHNOLOGY CO., LIMITED

UNLESS OTHERWISE
 SPECIFIED, TOLERANCE:

X.x iA0.20
 X.xx iA0.15
 X.xxx iA0.10
 ANGULAR iA3is

DESING	Nick.Yu	DATE	2015.09.09	TITLE:	ANTENNA RF SPRING SMT TYPE H:1.59mm L:3.55*1.50*1.59mm		
CHECKED	Nick.Yu	DATE	2015.09.09	REV:	04	SCALE:	16:1
APPROVED	Haiyong	DATE	2015.09.09	UNIT:	mm		
PART NO:	P-JS-TT-16			SIZE:	A4	SHEET:	1/1
DRAWING NO:	P-JS-TT-16						