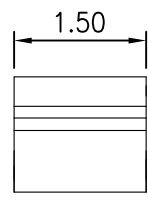
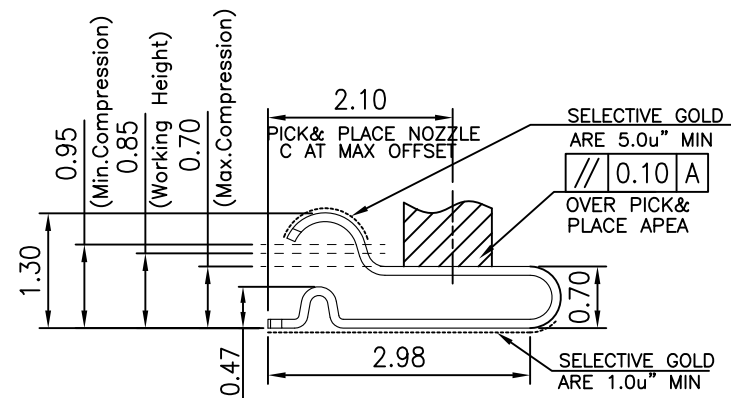
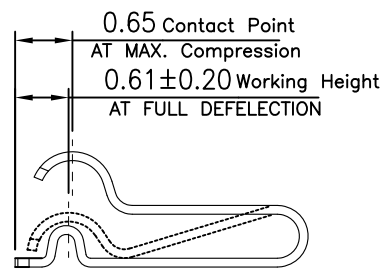
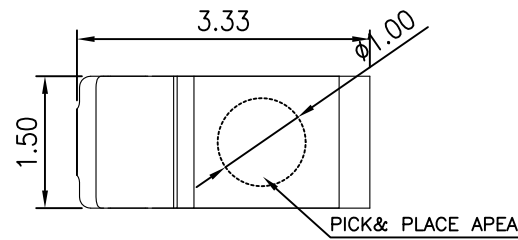


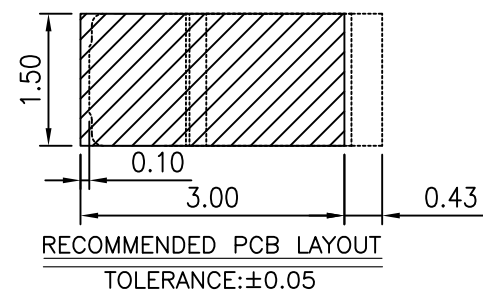
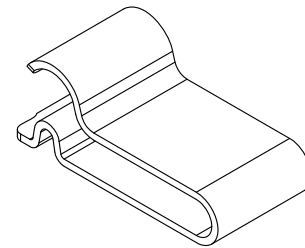
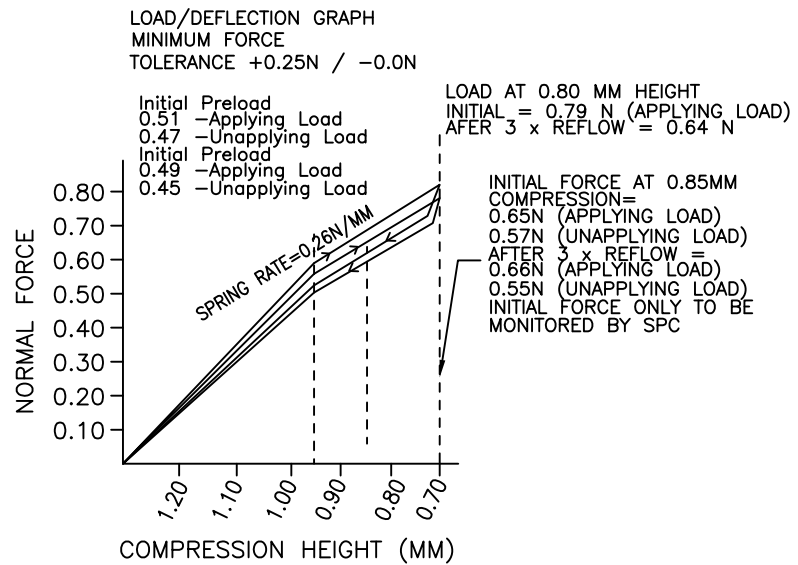
RoHS

REV.	LOCAS.	DESCRIPTION	DRAW.	DATE.
01	NEW	INITIAL RELEASE.	Steven	2014.02.17



NOTES:

1. MATERIAL:
 - 1.1 Copper Alloy
2. SPECIALITY:
 - 2.1 Contact Resistance: 30mΩ Max
 - 2.2 Operating Temperature: -20°C~+65°C
 - 2.3 Max. Beam Deflection: 0.90mm. On Contact POINT
3. RF PERFORMANCE:
 - 3.1 Impedance: 50 ohm.
 - 3.2 Insertion Loss: 0.6dBMax.(DC~3GHz)
 - 3.3 VSWR: 1.5MAX.(DC~3GHz)



MEASURE POINT: (QP)
QUADRANT POINT (QP)
TANGENCY POINT (TP)
INTERSECTION POINT (IP)



UNLESS OTHERWISE SPECIFIED, TOLERANCE:	DESING	Steven	DATE	2014.02.17	TITLE:	ANTENNA RF SPRING H:1.30mm C TYPE L:3.33*1.50*1.30mm											
X. ±0.25	CHECKED	Nick	DATE	2014.02.17	APPROVED	Liufei	DATE	2014.02.17	PART NO:	P-JS-TTC13	REV:	01	SCALE:	16:1	UNIT:	mm	
X.xx ±0.20											DRAWING NO:	P-JS-TTC13	SIZE:	A4	SHEET:	1/1	
X.xxx ±0.15																	
ANGULAR ±3°																	