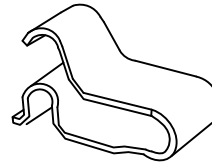
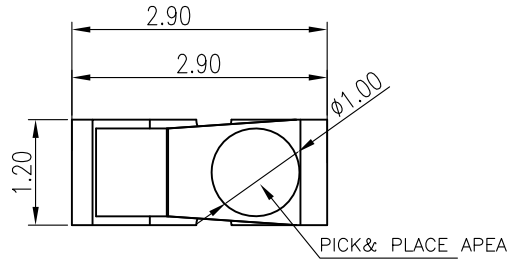


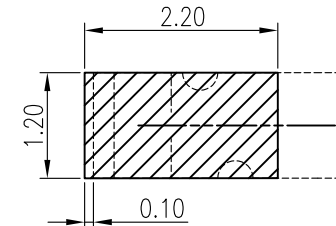
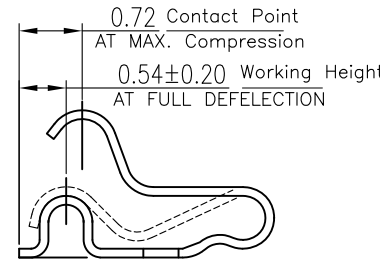
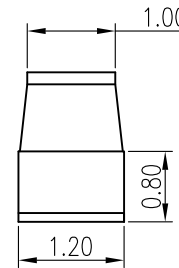
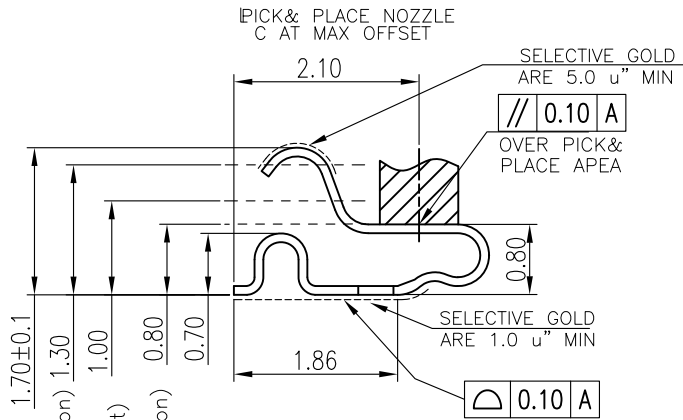
RoHS

REV.	LOCAS.	DESCRIPTION	DRAW.	DATE.
02	MODIFY	ECN20120018	Junly	2012.04.21
03	MODIFY	ECN-1408016	Andy	2014.08.11
04	MODIFY	UPDATE THE DRAWING FRAME	Alan	2016.02.23

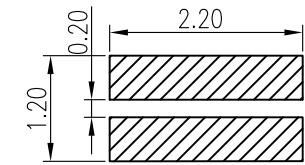


NOTES:

- MATERIAL:
 - 1.1 Copper Alloy T=0.10mm
- SPECIALITY:
 - 2.1 Contact Resistance: 30mΩ Max
 - 2.2 Operating Temperature: -20°C~+65°C
 - 2.3 Max. Beam Deflection: 0.90mm. On Contact POINT
- RF PERFORMANCE:
 - 3.1 Impedance: 50 ohm.
 - 3.2 Insertion Loss: 0.6dBMax.(DC~3GHz)
 - 3.3 VSWR: 1.5MAX.(DC~3GHz)

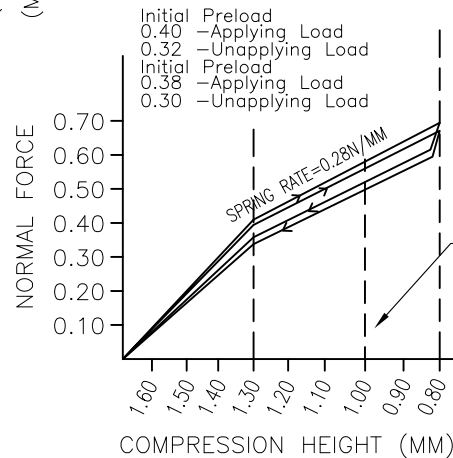


RECOMMENDED PCB LAYOUT
TOLERANCE: ±0.05



RECOMMENDED METAL MASK
THICKNESS 0.10mm

LOAD/DEFLECTION GRAPH
MINIMUM FORCE
TOLERANCE +0.25N / -0.0N



LOAD AT 0.80 MM HEIGHT
INITIAL = 0.68 N (APPLYING LOAD)
AFER 3 x REFLOW = 0.63 N

INITIAL FORCE AT 1.00MM
COMPRESSION=
0.55N (APPLYING LOAD)
0.46N (UNAPPLYING LOAD)
AFTER 3 x REFLOW =
0.50N (APPLYING LOAD)
0.43N (UNAPPLYING LOAD)
INITIAL FORCE ONLY TO BE
MONITORED BY SPC

1	Termiral 1	1PC	C5210-EH,T=0.10	Contact Au: 3u",platingAu: 1u",Ni: 60u"min
NO	Description	Dosage	Material	Color/plating

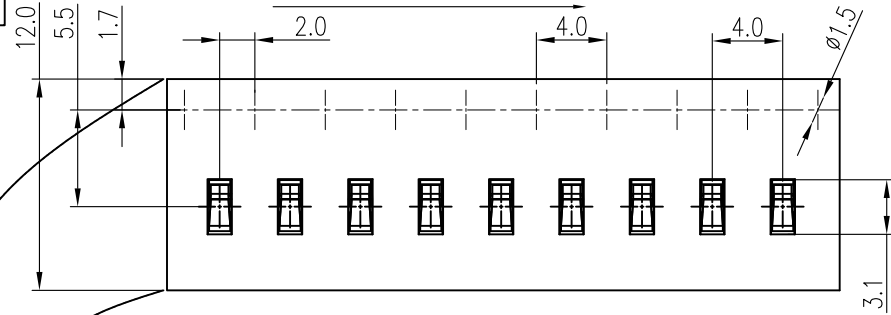
MEASURE POINT:
QUADRANT POINT (QP)
TANGENCY POINT (TP)
INTERSECTION POINT (IP)



UNLESS OTHERWISE
SPECIFIED, TOLERANCE:
X. ±0.25
X.x ±0.20
X.xx ±0.15
ANGULAR ±3'

DESING	ALan	DATE	2016.02.23	TITLE:	ANTENNA RF SPRING H:1.70mm D TYPE L:2.90*1.20*1.70mm		
CHECKED	Nick.F.H	DATE	2016.02.23	REV:	04	SCALE:	16:1
APPROVED	HaiYong.Luo	DATE	2016.02.23	UNIT:	mm	SHEET:	1/1
PART NO:	P-JS-29D17		DRAWING NO:	P-JS-29D17		SIZE:	A4

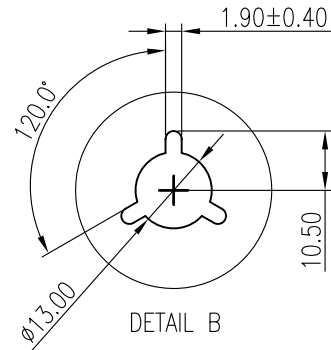
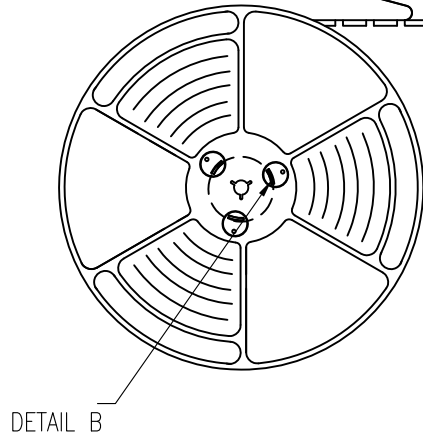
RoHS



COVER TAPE PEELING ANGLE: 165°~180°
PEELING FORCE: 20~130g

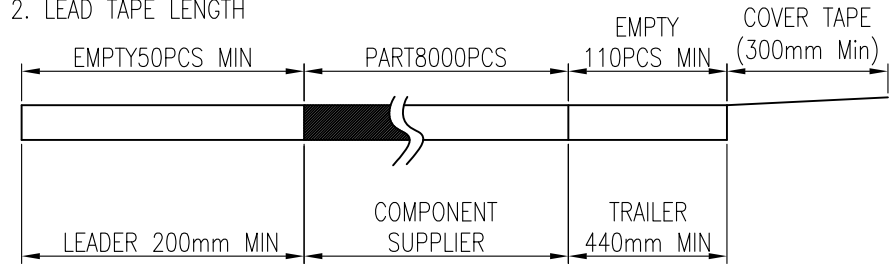
CARRIER TAPE

User Direction of Unreeling

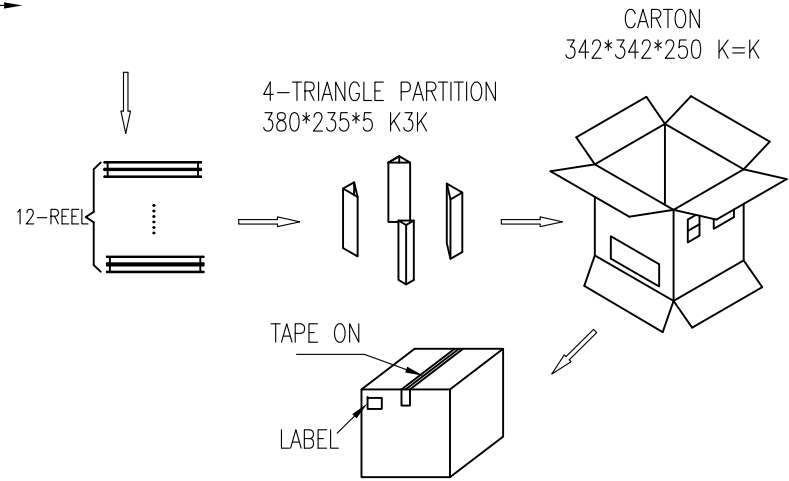


NOTES

1. NUMBER OF CONNECTORS: 8000PCS/REEL
2. LEAD TAPE LENGTH



3. QUANTITY: 96000PCS/CARTON
4. WEIGHT :
 - 3.1 NET WEIGHT : 2.764Kg
 - 3.2 GROSS WEIGHT : 6.164Kg



MEASURE POINT:
 QUADRANT POINT (QP)
 TANGENCY POINT (TP)
 INTERSECTION POINT (IP)

UNLESS OTHERWISE SPECIFIED, TOLERANCE:
 X. ±0.25
 X.X ±0.20
 X.XX ±0.15
 ANGULAR ±3°

JITS JITS TECHNOLOGY CO., LIMITED

DESING	Alan	DATE	2016.02.23	TITLE: ANTENNA RF SPRING H:1.70mm D TYPE L:2.90*1.20*1.70mm					
CHECKED	Nick.F.H	DATE	2016.02.23						
APPROVED	HaiYong.Luo	DATE	2016.02.23						
PART NO:			P-JS-29D17	REV:	04	SCALE:	1:1	UNIT:	mm
DRAWING NO:			P-JS-29D17	SIZE:	A4	SHEET:	2/2		