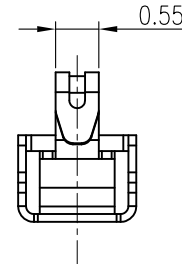
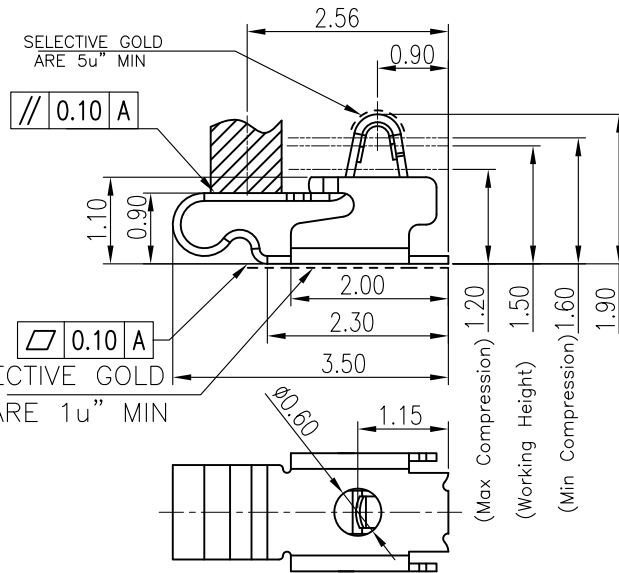
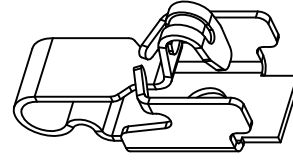
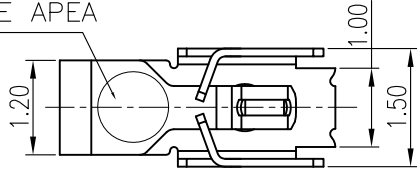
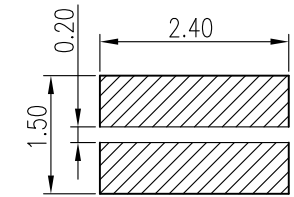
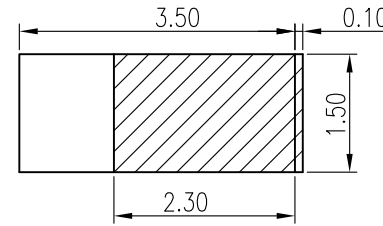


REV.	LOCAS.	DESCRIPTION	DRAW.	DATE.
02	MODIFY	ECN-1408016	Andy	08/11'14
03	MODIFY	UPDATE THE DRAWING FRAME	Alan	03/16'16
04	MODIFY	STRUCTURE CHANGE	Steven	05/24'16

PICK& PLACE APEA

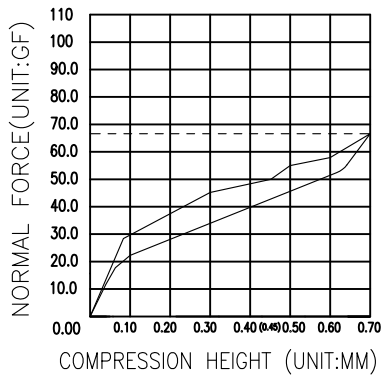


- 1.MATERIAL:
- 1.1 Copper Alloy
- 2.SPECIALITY:
- 2.1 Contact Resistance:30mΩ Max
- 2.3 Max. Beam Deflection:0.9mm.On Contact POINT
- 3. RF PERFORMANCE:
- 3.1 Impedance:50 ohm.
- 3.2 Insertion Loss: 0.6dBMax.(DC~3GHz)
- 3.3 VSWR: 1.5MAX.(DC~3GHz)



RECOMMENDED PCB LAYOUT
TOLERANCE:±0.05

RECOMMENDED METAL MASK
THICKNESS 0.10mm



NO	Description	Dosage	Material	Color/plating
1	Termiral 1	1PC	C5240-SH, T=0.10	3u" min. gold plating at contact area 1u" min. gold plat at solder tail area 60u" min. Nickel under plating over all

MEASURE POINT:
 QUADRANT POINT (QP)
 TANGENCY POINT (TP)
 INTERSECTION POINT (IP)

UNLESS OTHERWISE SPECIFIED, TOLERANCE:
 X.x ±0.20
 X.xx ±0.15
 X.xxx ±0.10
 ANGULAR ±3'

DESING Steven DATE 2016.03.16
 CHECKED Nick.F.H DATE 2016.03.16
 APPROVED HaiYong.Luo DATE 2016.03.16

PART NO: P-JS-TT-19
 DRAWING NO: P-JS-TT-19

TITLE:
 ANTENNA RF SPRING SMT TYPE
 H:1.90mmL:3.50*1.50*1.90mm

REV: 04 SCALE: 1:1 UNIT: mm
 SIZE: A4 SHEET: 1/1