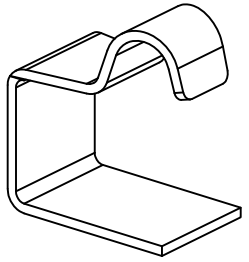
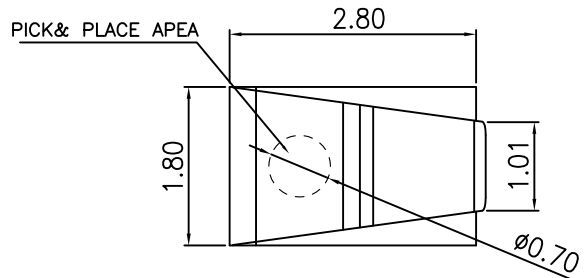


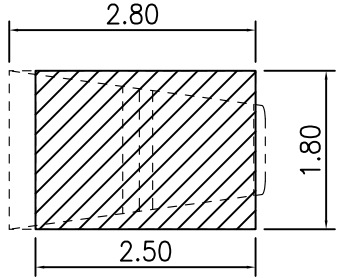
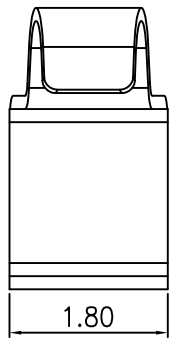
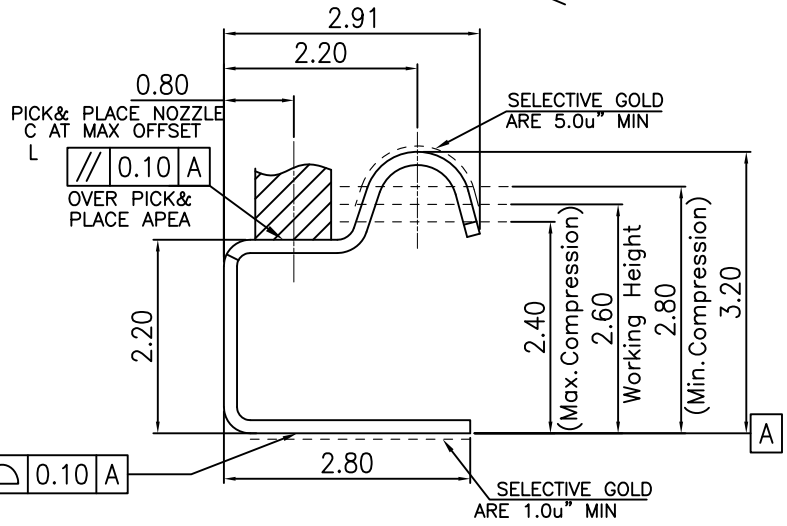
RoHS

REV.	LOCAS.	DESCRIPTION	DRAW.	DATE.
01	NEW	INITIAL RELEASE.	Junly	2013.03.13

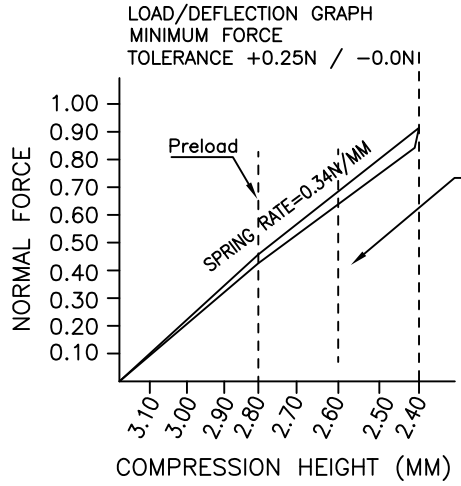
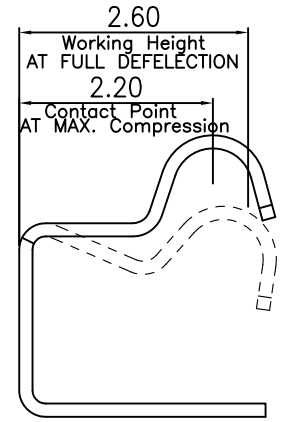


NOTES:

- 1.MATERIAL:
 - 1.1 Copper Alloy
- 2.SPECIALITY:
 - 2.1 Contact Resistance:50mΩ Max
 - 2.2 Operating Temperature:-20°C~+65°C
 - 2.3 Max. Beam Deflection:.0.80mmOn Contact POINT
3. RF PERFORMANCE:
 - 3.1 Impedance:50 ohm.
 - 3.2 Insertion Loss: 0.6dBMax.(DC~3GHz)
 - 3.3 VSWR: 1.5MAX.(DC~3GHz)



RECOMMENDED PCB LAYOUT
TOLERANCE:±0.05



LOAD AT 2.40 MM HEIGHT
INITIAL = 1.05 N (APPLYING LOAD)
AFER 3 x REFLOW = 0.96 N

INITIAL FORCE AT 2.60MM COMPRESSION=
0.75N (APPLYING LOAD)
0.71N (UNAPPLYING LOAD)
AFTER 3 x REFLOW =
0.74N (APPLYING LOAD)
0.67N (UNAPPLYING LOAD)
INITIAL FORCE ONLY TO BE MONITORED BY SPC

Initial Preload
0.55 -Applying Load
0.54 -Unapplying Load
Initial Preload
0.52 -Applying Load
0.47 -Unapplying Load

MEASURE POINT:
QUADRANT POINT (QP)
TANGENCY POINT (TP)
INTERSECTION POINT (IP)



UNLESS OTHERWISE SPECIFIED, TOLERANCE:	DESING	July	DATE	2013.03.13	TITLE:	ANTENNA RF SPRING SMT TYPE H:3.20MM L:2.80*1.80*3.20mm			
X. ±0.25	CHECKED	Nick	DATE	2013.03.13	REV: 01	SCALE: 12:1	UNIT: mm	SHEET: 1/1	
X.x ±0.20	APPROVED	Liufei	DATE	2013.03.13					
X.xx ±0.15	PART NO:	P-JS-TTB32			SIZE: A4				
ANGULAR ±3°	DRAWING NO:	P-JS-TTB32							