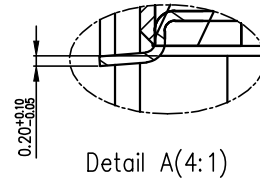
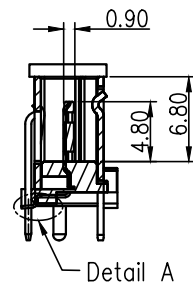
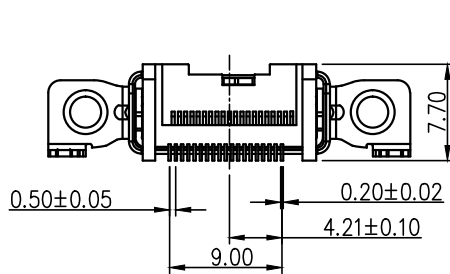
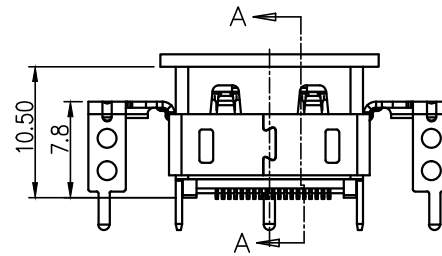
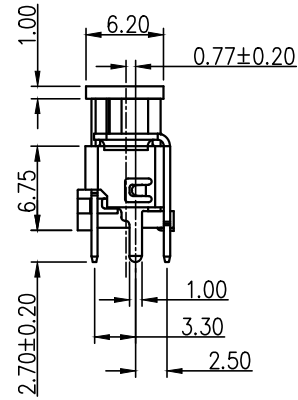
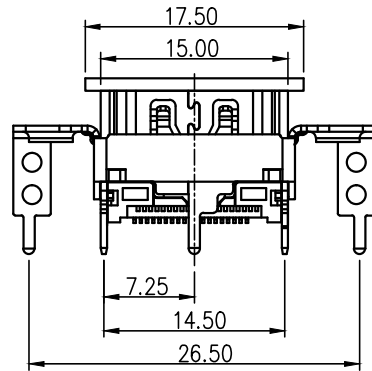
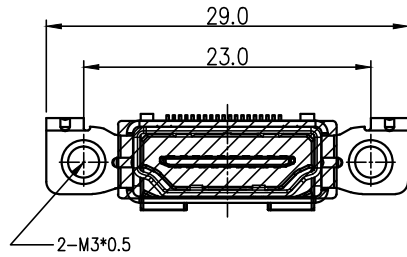
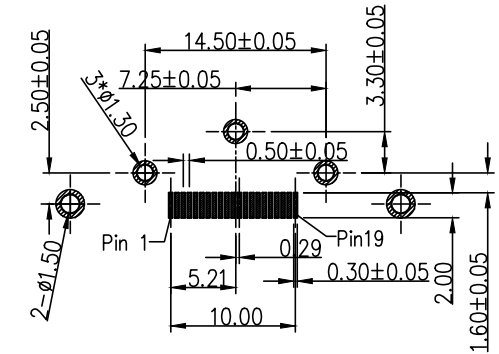


RoHS

REV.	LOCAS.	DESCRIPTION	DRAW.	DATE.
01	NEW	INITIAL RELEASE.	Wang Gang	2015.09.02



- NOTE:
- Material:
 - Housing: Thermoplastics,UL94V-0; COLOR: BLACK
 - Contact: Copper Alloy
 - Shell: Copper Alloy
 - Outside Shell: SPCC
 - FINISH:
 - Contact: Au Plated on Contact Arca, Matte Tin Plated on Solder Tails, Nickel Underplating Over All.
 - Shell: Nickel Underplating Over All.
 - Specification:
 - 3.1: Electrical:
 - Insulation Resistance(EIA-364-21): 100m Ω Min. at 500V/DC for 1Minute.
 - Contact Resistance(EIA-364-06): 30 m Ω Max.
 - Dielectric Withstanding Voltage(EIA-364-20): No discharge, flashover or breakdown at 500V/AC 1Minute



RECOMMENDED PCB LAYOUT (TOP VIEW)

MEASURE POINT: QUADRANT POINT (QP) TANGENCY POINT (TP) INTERSECTION POINT (IP)				
	UNLESS OTHERWISE SPECIFIED, TOLERANCE: X: ±0.25 X.x: ±0.20 X.xx: ±0.15 ANGULAR: ±3°	DESING: Wang Gang CHECKED: APPROVED:	DATE: 2015.09.02 DATE: DATE:	TITLE: HDMI 19P SMT型 180度 高度10.5H 双锁孔7.8H 带塞子
PART NO: HA105-K1903A		REV:	SCALE:	UNIT: mm
DRAWING NO: HA105-K1903A		SIZE:	SHEET:	